

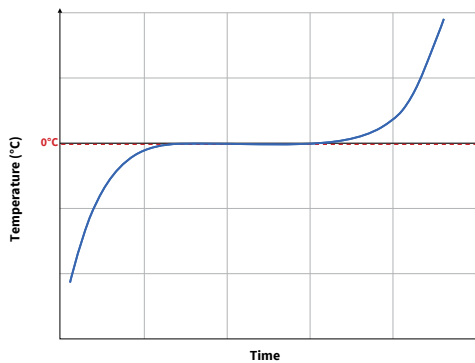
CHARACTERISTICS

Dimensions :	176 x 108 x 30 mm
Material :	Polyethylene HDPE
Color :	White
Weight : (liquid + plate)	0,44 kg

PERFORMANCES

Liquid type :	COOL0°C
Refrigerating capacity :	118 kJ or 28 kcal
Latent heat at melting point :	339 kJ/kg
Freezing T°C :	-18°C / 24h
T°C target :	0°C to +12°C (*)
Cap color :	White

(*) Thermal data as an indication, do not hesitate to consult us to find the best device for your cold chain needs.



PACKAGING

Nb of pieces per carton :	50
Nb of pieces per pallet :	2000
Carton dimension :	540 x 340 x 190 mm
Pallet dimension :	1200 x 1000 x 1670 mm
Carton weight :	22,45 kg
Pallet weight :	921,8 kg

The indicated weight values are variable to +/- 5%.

AVAILABLE EUTECTIC LIQUIDS

0°C	-3°C	-12°C	-16°C	-18°C
-21°C	-23°C	-26°C	-30°C	
+5°C	+18°C	+22°C	+37°C	+68°C

HANDLING

Before each use, you must freeze the eutectic liquid contained in the plate until it is solid completely. For this, put the eutectic plate for at least 24 hours in a freezer whether the temperature should be at least 6°C below the temperature of the eutectic mixture indicated on the colored cap.

To get a good performance, the eutectic liquid must be completely solid before use.

Because of the conception of the plate, we advice to freeze the plate in an horizontal position, if possible, in order to get an homogeneous repartition of the liquid in all the volume of the plate. In that way, the mechanical pressure made by the solidification of the liquid will be homogeneous in all the plate but also the optimization of the heat exchange over your products to cool.

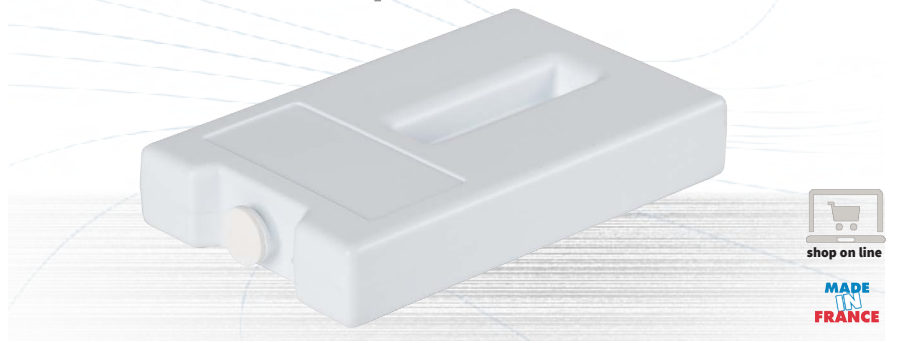
Do not expose eutectic plates to extreme temperatures above + 50 °C or above -45 °C.

Once frozen, the eutectic plates are sensitive to shocks.

Item : 350019-0

Eutectic plate GN1/9

0°C



MADE IN FRANCE

ERGONOMICS



Ultrasonic welded cap



Anchor points



Reinforced corners



Marking zone



Polyethylene HDPE

ADVANTAGES

- . High energy performance in cold returned,
- . Perfect sealing by ultrasonic welding,
- . High density polyethylene material suitable for food contact,
- . Ideal for **fresh or sensitive fresh products**,
- . White color plate for visible cleanliness,
- . Gastronorm format GN1/9,
- . Robust thanks to reinforced corners and anchor points,
- . Dimensions adapted to our range of EPP insulated boxes,
- . Indication of the eutectia temperature engraved on colored cap.

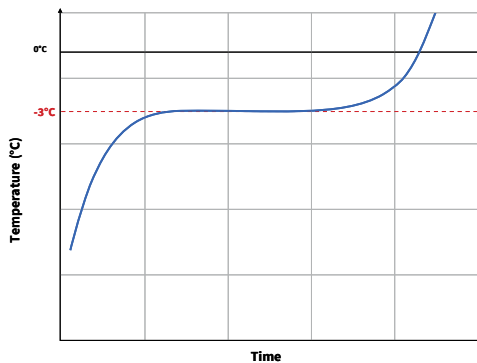
CHARACTERISTICS

Dimensions :	176 x 108 x 30 mm
Material :	Polyethylene HDPE
Color :	White
Weight : (liquid + plate)	0,44 kg

PERFORMANCES

Liquid type :	COOL-3°C
Refrigerating capacity :	109 kJ or 26 Kcal
Latent heat at melting point :	308 kJ/kg
Freezing T°C :	-18°C / 24h
T°C target :	0°C to +6°C (*)
Cap color :	Green

(*) Thermal data as an indication, do not hesitate to consult us to find the best device for your cold chain needs.



PACKAGING

Nb of pieces per carton :	50
Nb of pieces per pallet :	2000
Carton dimension :	540 x 340 x 190 mm
Pallet dimension :	1200 x 1000 x 1670 mm
Carton weight :	22,7 kg
Pallet weight :	932,7 kg

The indicated weight values are variable to +/- 5%.

AVAILABLE EUTECTIC LIQUIDS

0°C	-3°C	-12°C	-16°C	-18°C
-21°C	-23°C	-26°C	-30°C	
+5°C	+18°C	+22°C	+37°C	+65°C

HANDLING

Before each use, you must freeze the eutectic liquid contained in the plate until it is solid completely. For this, put the eutectic plate for at least 24 hours in a freezer whether the temperature should be at least 6°C below the temperature of the eutectic mixture indicated on the colored cap.

To get a good performance, the eutectic liquid must be completely solid before use.

Because of the conception of the plate, we advice to freeze the plate in an horizontal position, if possible, in order to get an homogeneous repartition of the liquid in all the volume of the plate. In that way, the mechanical pressure made by the solidification of the liquid will be homogeneous in all the plate.

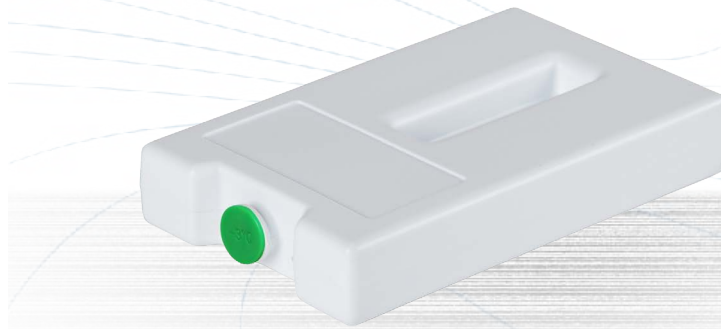
Do not expose eutectic plates to extreme temperatures above + 50 °C or above -45 °C.

Once frozen, the eutectic plates are sensitive to shocks.

Item : 350019-3

Eutectic plate GN1/9

-3°C

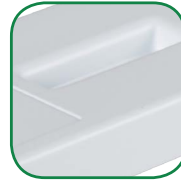


MADE IN FRANCE

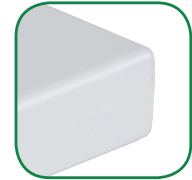
ERGONOMIE



Ultrasonic welded cap



Anchor points



Reinforced corners



Marking zone



Polyethylene HDPE

ADVANTAGES

- . High energy performance in cold returned,
- . Perfect sealing by ultrasonic welding,
- . High density polyethylene material suitable for food contact,
- . Ideal for **fresh or sensitive fresh products**,
- . White color plate for visible cleanliness,
- . Gastronorm format GN1/9,
- . Robust thanks to reinforced corners and anchor points,
- . Dimensions adapted to our range of EPP insulated boxes,
- . Indication of the eutectia temperature engraved on colored cap.

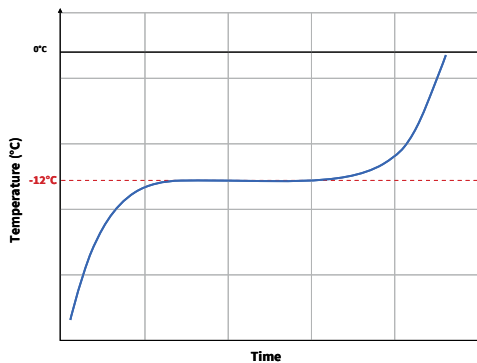
CHARACTERISTICS

Dimensions :	176 x 108 x 30 mm
Material :	Polyethylene HDPE
Color :	White
Weight : (liquid + plate)	0,47 kg

PERFORMANCES

Liquid type :	COOL-12°C
Refrigerating capacity :	105 kJ or 25 kcal
Latent heat at melting point :	276 kJ/kg
Freezing T°C :	-18°C / 24h
T°C target :	0°C to +4°C (*)
Cap color :	Blue

(*) Thermal data as an indication, do not hesitate to consult us to find the best device for your cold chain needs.



PACKAGING

Nb of pieces per carton :	50
Nb of pieces per pallet :	2000
Carton dimension :	540 x 340 x 190 mm
Pallet dimension :	1200 x 1000 x 1670 mm
Carton weight :	24,1 kg
Pallet weight :	986 kg

The indicated weight values are variable to +/- 5%.

AVAILABLE EUTECTIC LIQUIDS

0°C	-3°C	-12°C	-16°C	-18°C
-21°C	-23°C	-26°C	-30°C	
+5°C	+18°C	+22°C	+37°C	+65°C

HANDLING

Before each use, you must freeze the eutectic liquid contained in the plate until it is solid completely. For this, put the eutectic plate for at least 24 hours in a freezer whether the temperature should be at least 6°C below the temperature of the eutectic mixture indicated on the colored cap.

To get a good performance, the eutectic liquid must be completely solid before use.

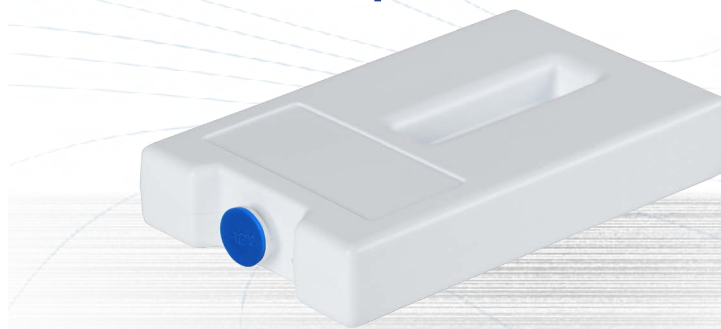
Because of the conception of the plate, we advice to freeze the plate in an horizontal position, if possible, in order to get an homogeneous repartition of the liquid in all the volume of the plate. In that way, the mechanical pressure made by the solidification of the liquid will be homogeneous in all the plate.

Do not expose eutectic plates to extreme temperatures above + 50 °C or above -45 °C.
Once frozen, the eutectic plates are sensitive to shocks.

Item : 350019-12

Eutectic plate GN1/9

-12°C



MADE IN FRANCE

ERGONOMICS



Ultrasonic welded cap



Anchor points



Reinforced corners



Marking zone



Polyethylene HDPE

ADVANTAGES

- . High energy performance in cold returned,
- . Perfect sealing by ultrasonic welding,
- . High density polyethylene material suitable for food contact,
- . Ideal for **fresh or sensitive fresh products**,
- . White color plate for visible cleanliness,
- . Gastronorm format GN1/9,
- . Robust thanks to reinforced corners and anchor points,
- . Dimensions adapted to our range of EPP insulated boxes,
- . Indication of the eutexia temperature engraved on colored cap.

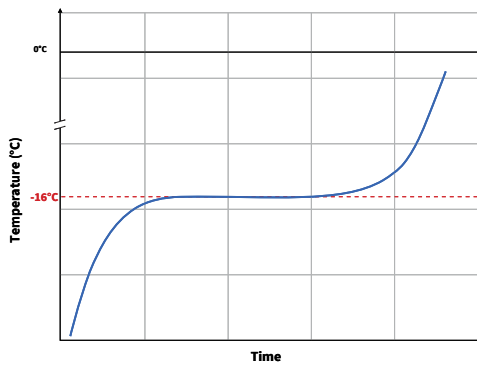
CHARACTERISTICS

Dimensions :	176 x 108 x 30 mm
Material :	Polyethylene HDPE
Color :	White
Weight : (liquid + plate)	0,46 kg

PERFORMANCES

Liquid type :	COOL-16°C
Refrigerating capacity :	115 kJ or 27 kcal
Latent heat at melting point :	312 kJ/kg
Freezing T°C :	-22°C / 24h
T°C target :	-22°C to -15°C (*)
Cap color :	Red

(*) Thermal data as an indication, do not hesitate to consult us to find the best device for your cold chain needs.



PACKAGING

Nb of pieces per carton :	50
Nb of pieces per pallet :	2000
Carton dimension :	540 x 340 x 190 mm
Pallet dimension :	1200 x 1000 x 1670 mm
Carton weight :	23,45 kg
Pallet weight :	961,9 kg

The indicated weight values are variable to +/- 5%.

AVAILABLE EUTECTIC LIQUIDS

0°C	-3°C	-12°C	-16°C	-18°C
-21°C	-23°C	-26°C	-30°C	
+5°C	+18°C	+22°C	+37°C	+65°C

HANDLING

Before each use, you must freeze the eutectic liquid contained in the plate until it is solid completely. For this, put the eutectic plate for at least 24 hours in a freezer whether the temperature should be at least 6°C below the temperature of the eutectic mixture indicated on the colored cap.

To get a good performance, the eutectic liquid must be completely solid before use.

Because of the conception of the plate, we advice to freeze the plate in an horizontal position, if possible, in order to get an homogeneous repartition of the liquid in all the volume of the plate. In that way, the mechanical pressure made by the solidification of the liquid will be homogeneous in all the plate.

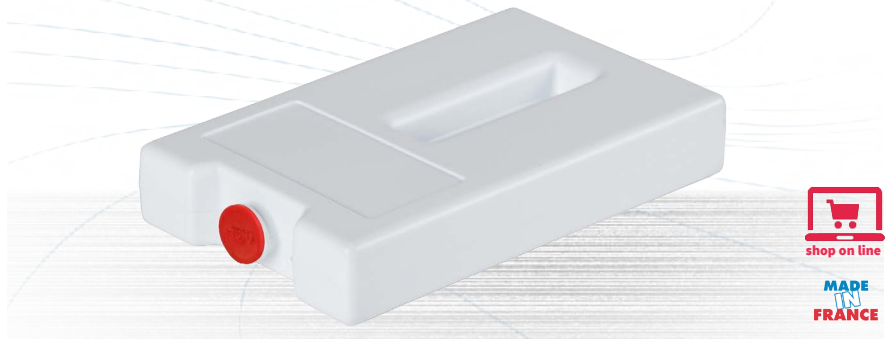
Do not expose eutectic plates to extreme temperatures above + 50 °C or above -45 °C.

Once frozen, the eutectic plates are sensitive to shocks.

Item : 350019-16

Eutectic plate GN1/9

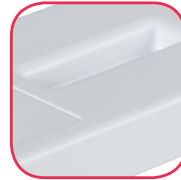
-16°C



ERGONOMICS



Ultrasonic welded cap



Anchor points



Reinforced corners



Marking zone



Polyethylene HDPE

ADVANTAGES

- . High energy performance in cold returned,
- . Perfect sealing by ultrasonic welding,
- . High density polyethylene material suitable for food contact,
- . Ideal for **frozen products**,
- . White color plate for visible cleanliness,
- . Gastronorm format GN1/9,
- . Robust thanks to reinforced corners and anchor points,
- . Dimensions adapted to our range of EPP insulated boxes,
- . Indication of the eutectia temperature engraved on colored cap.

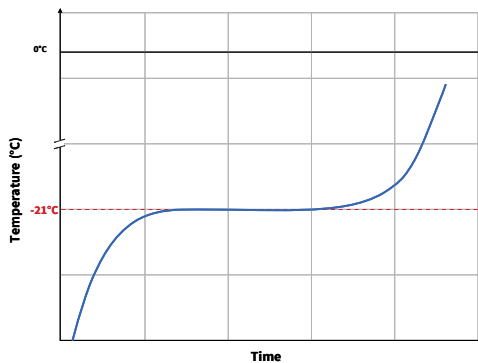
CHARACTERISTICS

Dimensions :	176 x 108 x 30 mm
Material :	Polyethylene HDPE
Color :	White
Weight : (liquid + plate)	0,50 kg

PERFORMANCES

Liquid type :	COOL-21°C
Refrigerating capacity :	97 kJ or 23 kcal
Latent heat at melting point :	238 kJ/kg
Freezing T°C :	-27°C / 24h
T°C target :	-27°C to -21°C (*)
Cap color :	Yellow

(*) Thermal data as an indication, do not hesitate to consult us to find the best device for your cold chain needs.



PACKAGING

Nb of pieces per carton :	50
Nb of pieces per pallet :	2000
Carton dimension :	540 x 340 x 190 mm
Pallet dimension :	1200 x 1000 x 1670 mm
Carton weight :	25,5 kg
Pallet weight :	1045 kg

The indicated weight values are variable to +/- 5%.

AVAILABLE EUTECTIC LIQUIDS

0°C	-3°C	-12°C	-16°C	-18°C
-21°C	-23°C	-26°C	-30°C	
+5°C	+18°C	+22°C	+37°C	+65°C

HANDLING

Before each use, you must freeze the eutectic liquid contained in the plate until it is solid completely. For this, put the eutectic plate for at least 24 hours in a freezer whether the temperature should be at least 6°C below the temperature of the eutectic mixture indicated on the cap.

To get a good performance, the eutectic liquid must be completely solid before use.

Because of the conception of the plate, we advice to freeze the plate in an horizontal position, if possible, in order to get an homogeneous repartition of the liquid in all the volume of the plate. In that way, the mechanical pressure made by the solidification of the liquid will be homogeneous in all the plate.

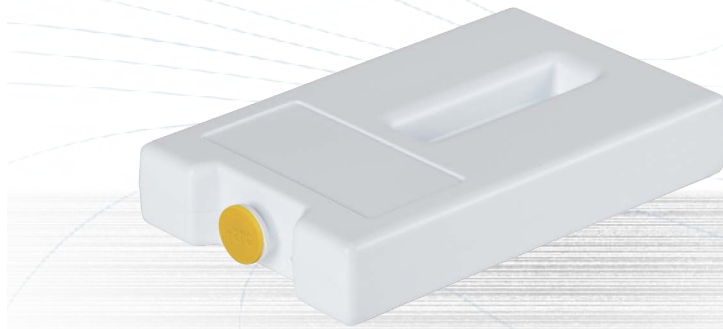
Do not expose eutectic plates to extreme temperatures above + 50 °C or above -45 °C.

Once frozen, the eutectic plates are sensitive to shocks.

Item : 350019-21

Eutectic plate GN1/9

-21°C



MADE
FRANCE

ERGONOMICS



Ultrasonic welded cap



Anchor points



Reinforced corners



Marking zone



Polyethylene HDPE

ADVANTAGES

- . High energy performance in cold returned,
- . Perfect sealing by ultrasonic welding,
- . High density polyethylene material suitable for food contact,
- . Ideal for **frozen products**,
- . White color plate for visible cleanliness,
- . Gastronorm format GN1/9,
- . Robust thanks to reinforced corners and anchor points,
- . Dimensions adapted to our range of EPP insulated boxes,
- . Indication of the eutectia temperature engraved on colored cap.